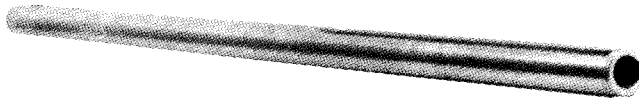


AXLES

To place an ORDER

1-513-539-9900



SNAP RING AXLES CHROME-MOLY TUBE AXLES 4130 STEEL

Chrome-Moly Tubular Axles are centerless-ground for a true surface. Two 1/4" keyways are offset 180 degrees and stop 1/4" from each end before each snap ring groove. Plated and poly-wrapped for protection, they include snap rings.

Part No.	Description	Racer Net
AZ1421-26	1 1/4" x 26" .190 wall	\$ 59.95
AZ1421-34	1 1/4" x 34" .190 wall	61.95
AZ1421-36	1 1/4" x 36" .190 wall	61.95
AZ1421-38	1 1/4" x 38" .190 wall	66.95
AZ1421-40	1 1/4" x 40" .190 wall	66.95
AZ1421-42	1 1/4" x 42" .190 wall	70.95
AZ1421-44	1 1/4" x 44" .190 wall	71.95
AZ1432-40	1 1/4" x 40" (tubular aluminum)	57.95
AZ1413-40	1" x 40" solid (steel snap ring type)	42.95



1" DELUXE FLEXPURF STEEL AXLES

We have selected an extremely tough steel for our high quality Deluxe Flexpruf Axles. The ends step down for 1" to 3/4" and have a 3/4-16 thread. Two keyways (1/4) are offset 180 degrees for stress relief, balance and unrestricted positioning of brakes, bearings, and hubs. Ends are drilled for your cotter pins or safety wire. Plated and poly-wrapped for protection.

Part No.	Length	Shoulder to Shoulder	Racer Net
AZ1411-36	36"	32"	\$ 39.95
AZ1411-38	38"	34"	40.95
AZ1411-40	40"	36"	42.95
AZ1411-44	44"	40"	45.95
AZ8516	3/4" x 16	Loc Nut	.70

AXLE SNAP RINGS

Part No.	Description	Racer Net
AZ8343	1" or 25 mm snap ring	\$.25
AZ8340	1 1/4" snap ring	.27

MARGAY 40 mm Axle & Hardware

Part No.	Description	Racer Net
M093551	41" x 40mm x 3mm wall (standard axle)	\$119.95
M093555	41" x 40mm x 3mm wall (soft axle, type M)	116.64
M093557	41" x 40mm x 3mm wall (hard axle, type X)	116.64
M093558	41" x 40mm x 3mm wall (x-hard axle, type XX)	116.64
M093553	41" x 1040mm x 4mm wall axle	116.64
M093580	Peg style metric key	6.95
M093582	Key stock 8 x 6 x 60mm	3.50
M093584	Key stock 8 x 6 x 100mm	3.55

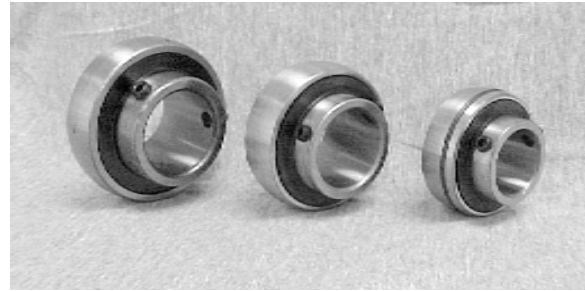
PRICES SUBJECT TO CHANGE WITHOUT NOTICE

AXLE BEARINGS & ACCESSORIES

To place an ORDER
1-513-539-9900

AXLE BEARINGS

Part No.	Description	Racer Net
AZ8211	1" Free spinning axle bearing	\$ 8.95
AZ8214	1 1/4" Free spinning axle bearing	9.95
KM309	40mm free spinning axle bearing	11.95
KM311	40mm free spinning axle bearing	11.95

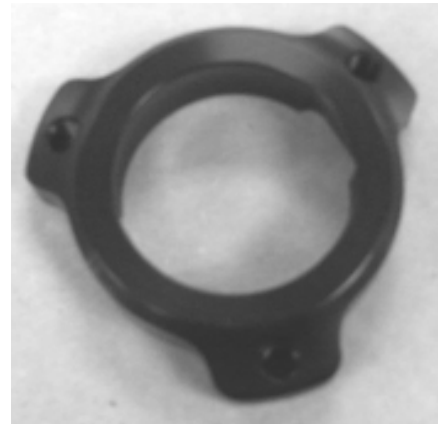


KM309- 34 mm overall width, 18 mm race width
KM311- 50 mm overall width, 21 mm race width

AXLE CASSETTE

- * Billet aluminum
- * Self-aligning
- * Compensates for misalignment
- * Black anodized

Part No.	Description	Racer Net
KMAC	Cassette to fit 1 1/4" axle	\$ 23.95 each



LOCKING COLLAR

These are the popular clamp design that firmly grip all around the shaft. Made from steel with black oxide finish or aluminum plain finish.

Part No.	Description	Racer Net
KMLC1	1" bore two-piece aluminum 1/4" keyway	\$ 8.95
KMLC114	1 1/4" bore two-piece aluminum 1/4" keyway	5.95
KMLC40	40mm bore two-piece aluminum 8mm keyway	9.95
KMLC50	50mm bore tow-piece aluminum 8mm keyway	11.95



KEYSTOCK

(1/4" or 3/16" x 1 ft.)

Part No.	Description	Racer Net
AZ8403	1/4" x 1/4" x 1 ft.	\$ 1.45
AZ8404	3/16" x 1/4" x 1 ft.	1.50



PRICES SUBJECT TO CHANGE WITHOUT NOTICE

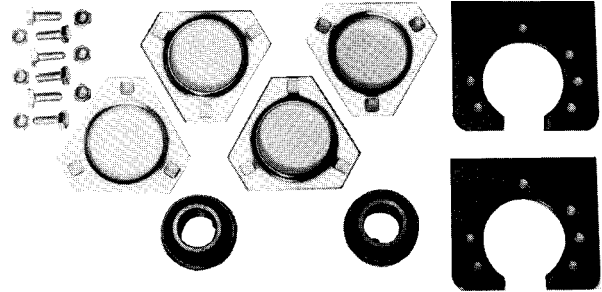
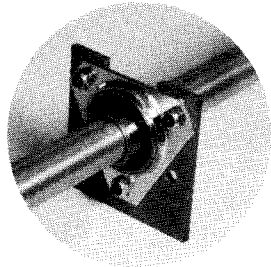
AXLES & BEARINGS

To place an ORDER

1-513-539-9900

LIVE AXLE BEARING KITS & COMPONENTS

These kits include everything needed to assemble a live axle to your frame. The bearing hangers are designed to accept either the two or three hole bearing flangettes. Will work with all Azusa axles. For very long axles, an additional bearing and hanger may be needed.



BEARING KITS FOR 1" AXLES

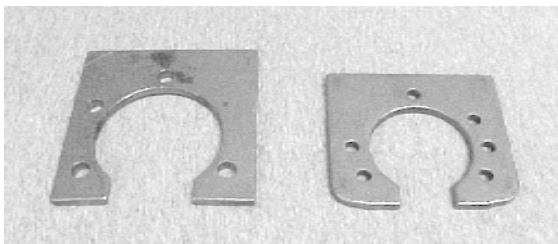
Part No.	Description	Racer Net
AZ1861A	Kit with 2 hole flangettes	\$ 26.95
AZ1861B	Kit with 3 hole flangettes	26.95

BEARING KITS FOR 1 1/4" AXLES

Part No.	Description	Racer Net
AZ1862	Kit with 3 hole flangettes	\$ 33.95

BEARING HANGERS

**Sturdy!
Economical!
Ready to weld!**



Part No.	Description	Racer Net
AZ8127	Bearing Hangers-1" axles	\$ 3.90
AZ8130	Bearing Hangers-1 1/4" axles	5.36

BEARING FLANGETTES

**To secure your axle bearings!
Available in 2 & 3 hole!**



Part No.	Description	Racer Net
AZ8212	Bearing Flangette 2 hole for 1" axles	\$ 1.40 ea.
AZ8213	Bearing Flangette 3 hole for 1" axles	1.50 ea.
AZ8217	Bearing Flangette 3 hole for 1 1/4" axles	2.35 ea.